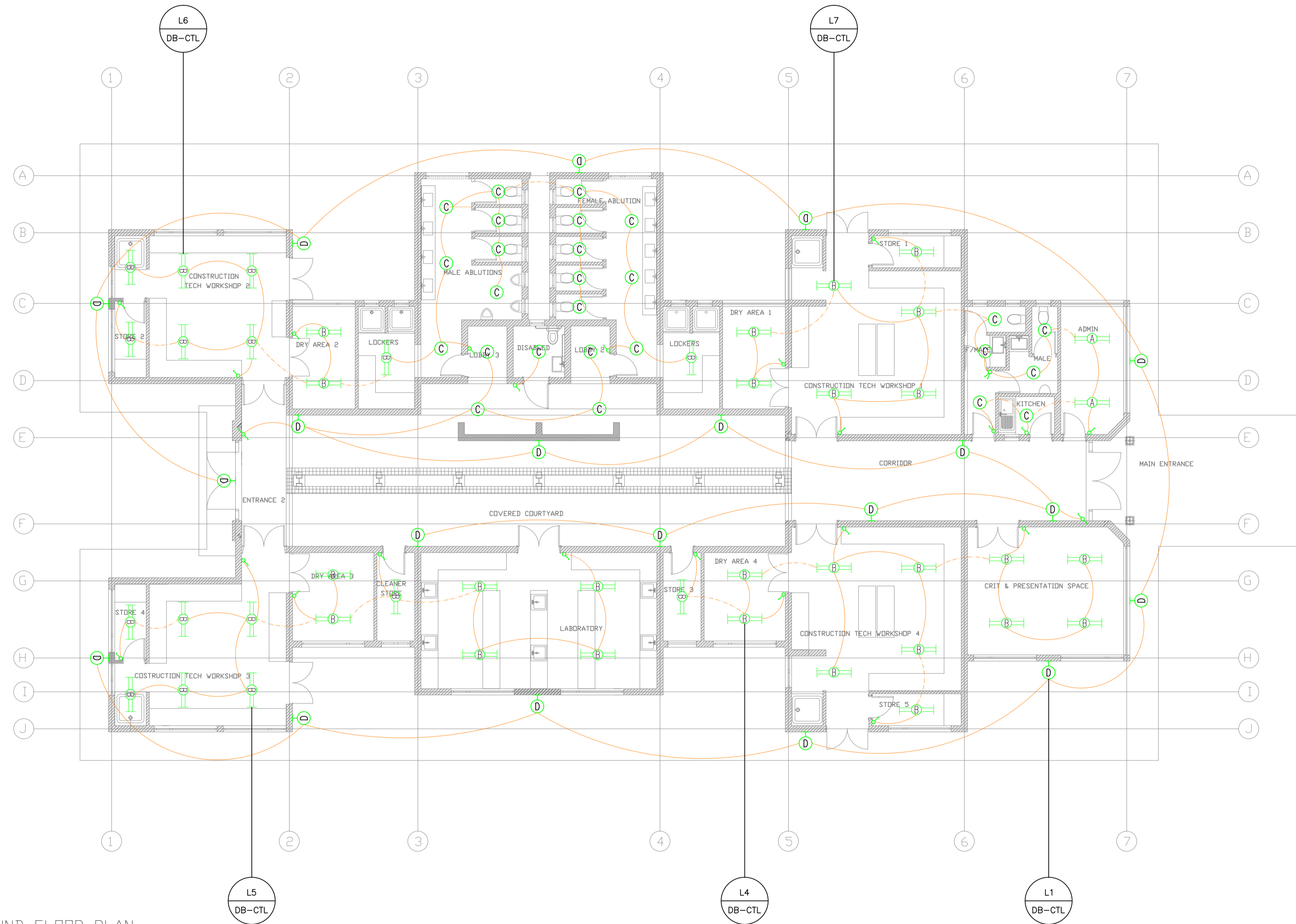
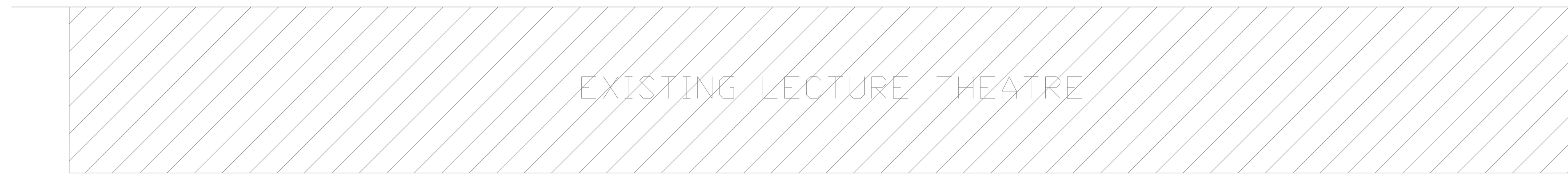


REVISION	DATE	DESCRIPTION	REV. BY
A	30-05-2015	ISSUED FOR INFORMATION	M.M




GROUND FLOOR PLAN
Scale 1:100


LEGEND	
	2 x 36W SABS APPROVED SURFACE MOUNTED FLUORESCENT LUMINAIRE WITH LOW BRIGHTNESS DIFFUSER & EGG, SIMILAR OR APPROVED EQUAL TO VOLTEX LIGHTING TYPE M30-236-ELB/LIB
	2 x 36W SABS APPROVED SURFACE MOUNTED WEATHERPROOF FLUORESCENT LUMINAIRE WITH ONE-PIECE INJECTED POLYCARBONATE DIFFUSER & EGG, SIMILAR OR APPROVED EQUAL TO VOLTEX LIGHTING TYPE C2-236-ELB
	1 x 18W SABS APPROVED COMPACT FLUORESCENT DOWNLIGHT LUMINAIRE WITH EGG, EQUIVALENT TO BEKA TYPE RONDO-V 1118W /EGG-MD
	2 x 18W SABS APPROVED COMPACT FLUORESCENT WALL MOUNTED BULKHEAD WITH EGG, EQUIVALENT TO BEKA TYPE SERIES 30 31218
	2 x 36W SABS APPROVED SURFACE MOUNTED OPEN CHANNEL FLUORESCENT LUMINAIRE WITH ELECTRONIC CONTROL GEAR, SIMILAR OR APPROVED EQUAL TO VOLTEX LIGHTING TYPE R1-236-ELB
	PRATLEY FOUNDATION BOX
	16A SINGLE LEVER LIGHT SWITCH
	16A SINGLE LEVER 2 WAY LIGHT SWITCH
	10A WALL MOUNTED DAY/NIGHT SWITCH
	16A WEATHERPROOF SINGLE SWITCHED SOCKET OUTLET (+ 300 AFEL)
	16A WEATHERPROOF DOUBLE SWITCHED SOCKET OUTLET (+ 300 AFEL)
	3-PIN INDUSTRIAL SOCKET OUTLET, IP56 (+ 1000 AFEL)
	5-PIN INDUSTRIAL SOCKET OUTLET, IP56 (+ 1000 AFEL)
	TELEPHONE OUTLET
	DATA OUTLET
	TRIPLE POLE ISOLATOR
	DOUBLE POLE ISOLATOR
	TRIPLE POLE ISOLATOR IP56
	DOUBLE POLE ISOLATOR IP56
	110mm # PVC ELECTRICAL CABLE SLEEVE
	110mm # PVC TELECOMS SLEEVE
	PR000 WIRING CHANNEL WITH COVERS
	100mm WIDE MEDIUM DUTY WIREMESH CABLE TRAY
	2 COMPARTMENT EPOXY COATED STEEL POWER SHOOTING
	600mm x 600mm ELECTRICAL MANHOLE
	600mm x 600mm TELECOMS MANHOLE
	ELECTRICAL MAINS CABLE ROUTE
	ELECTRICAL DISTRIBUTION BOARD

ALL WORK TO BE IN ACCORDANCE WITH N.B.R.
BRAND NAMES DENOTE SIMILAR & EQUAL APPROVED.
ALL WORK AND MATERIALS IS TO COMPLY TO RELEVANT S.A.S. CODES WHERE APPLICABLE.
ALL DIMENSIONS AND HEIGHTS ARE TO BE CHECKED ON SITE BEFORE WORK IS PUT IN HAND.
ALL DISCREPANCIES TO BE REPORTED TO ENGINEER

Architect
Ramlin square
31 Hans Van Rensburg street
Polokwane
Tel:(+2715)291 4081
Fax:(+2715)291 4081
Cel:(+27)(0)82 404 0467
rendani@aspirearchitects.co.za



Client
UNIVERSITY OF VENDA
University Road
Thohoyandou
0950
Private Bag X5050
Thohoyandou 0950



Project
CONSTRUCTION
TECHNOLOGY LABORATORY

Consultant
High Voltage System Engineers
P.O.Box 11076
Vorna Valley, 1686
TEL: (011) 805-4627
FAX: (086) 561-8668
Email: admin@hvse.co.za



Description
LIGHTING LAYOUT

Drawing Number
E12030PRA11-E-01

Scale 1:100	Design VS
Drawn VS	Approved MM
Date 12-11-2014	Revision A