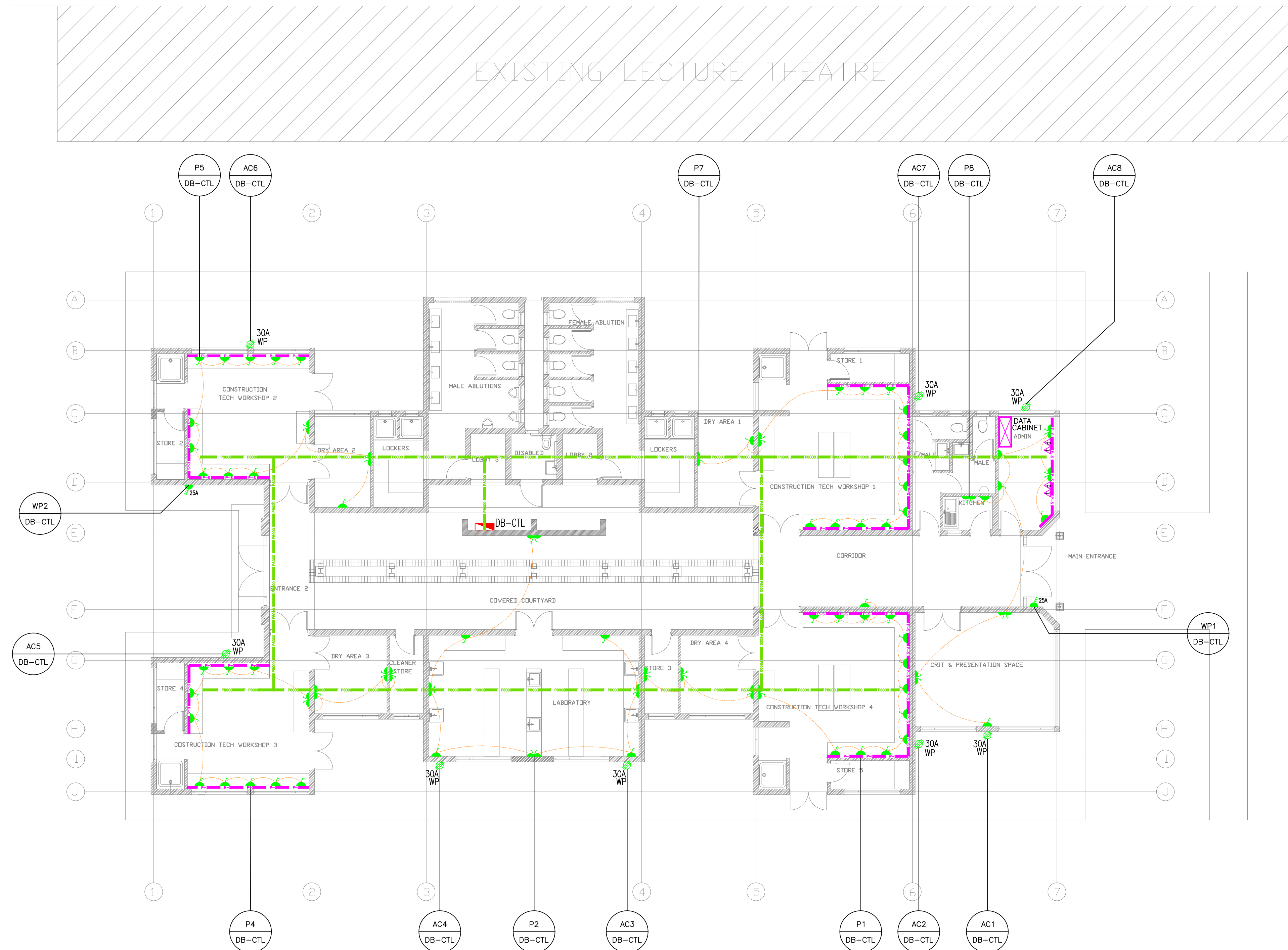


REVISION	DATE	DESCRIPTION	REV. BY
A	30-05-2015	ISSUED FOR INFORMATION	M.M



GROUND FLOOR PLAN  
Scale 1:100

LEGEND	
(A)	2 x 36W SABS APPROVED SURFACE MOUNTED FLUORESCENT LUMINAIRE WITH LOW BRIGHTNESS DIFFUSER & EGG, SIMILAR OR APPROVED EQUAL TO VOLTEX LIGHTING TYPE M30-236-ELB/LIB
(B)	2 x 36W SABS APPROVED SURFACE MOUNTED WEATHERPROOF FLUORESCENT LUMINAIRE WITH ONE-PIECE INJECTED POLYCARBONATE DIFFUSER & EGG, SIMILAR OR APPROVED EQUAL TO VOLTEX LIGHTING TYPE C2-236-ELB
(C)	1 x 18W SABS APPROVED COMPACT FLUORESCENT DOWNLIGHT LUMINAIRE WITH EGG, EQUIVALENT TO BEKA TYPE RONDO-V 1*18W /EGG-MD
(D)	2 x 18W SABS APPROVED COMPACT FLUORESCENT WALL MOUNTED BULKHEAD WITH EGG, EQUIVALENT TO BEKA TYPE SERIES 30 31218
(E)	2 x 36W SABS APPROVED SURFACE MOUNTED OPEN CHANNEL FLUORESCENT LUMINAIRE WITH ELECTRONIC CONTROL GEAR, SIMILAR OR APPROVED EQUAL TO VOLTEX LIGHTING TYPE R1-236-ELB
(F)	PRATLEY FOUNDATION BOX
(G)	16A SINGLE LEVER LIGHT SWITCH
(H)	16A SINGLE LEVER 2 WAY LIGHT SWITCH
(I)	10A WALL MOUNTED DAY/NIGHT SWITCH
(J)	16A WEATHERPROOF SINGLE SWITCHED SOCKET OUTLET (+ 300 AFPL)
(K)	16A WEATHERPROOF DOUBLE SWITCHED SOCKET OUTLET (+ 300 AFPL)
(L)	3-PIN INDUSTRIAL SOCKET OUTLET, IP56 (+ 1000 AFPL)
(M)	5-PIN INDUSTRIAL SOCKET OUTLET, IP56 (+ 1000 AFPL)
(N)	TELEPHONE OUTLET
(O)	DATA OUTLET
(P)	TRIPLE POLE ISOLATOR
(Q)	DOUBLE POLE ISOLATOR
(R)	TRIPLE POLE ISOLATOR IP56
(S)	DOUBLE POLE ISOLATOR IP56
(T)	110mm Ø PVC ELECTRICAL CABLE SLEEVE
(U)	110mm Ø PVC TELECOMS SLEEVE
(V)	100mm WIDE MEDIUM DUTY WIREMESH CABLE TRAY
(W)	2 COMPARTMENT EPOXY COATED STEEL POWER SHOOTING
(X)	600mm x 600mm ELECTRICAL MANHOLE
(Y)	600mm x 600mm TELECOMS MANHOLE
(Z)	ELECTRICAL MAINS CABLE ROUTE
(AA)	ELECTRICAL DISTRIBUTION BOARD

ALL WORK TO BE IN ACCORDANCE WITH N.B.R.  
BRAND NAMES DENOTE SIMILAR & EQUAL APPROVED.  
ALL WORK AND MATERIALS IS TO COMPLY TO RELEVANT S.A.S. CODES WHERE APPLICABLE.  
ALL DIMENSIONS AND HEIGHTS ARE TO BE CHECKED ON SITE BEFORE WORK IS PUT IN HAND.  
ALL DISCREPANCIES TO BE REPORTED TO ENGINEER.

**Architect**  
Ramlin square  
31 Hans Van Rensburg street  
Polokwane  
Tel:(+2715)291 4081  
Fax:(+2715)291 4081  
Cel:(+27)(0)82 404 0467  
rendani@aspirearchitects.co.za




**Client**  
UNIVERSITY OF VENDA  
University Road  
Thohoyandou  
0950  
Private Bag X5050  
Thohoyandou 0950



**Project**  
CONSTRUCTION TECHNOLOGY LABORATORY

**Consultant**  
High Voltage System Engineers  
P.O.Box 11076  
Vorna Valley, 1686  
TEL: (011) 805-4627  
FAX: (086) 561-8668  
Email: admin@hvse.co.za



**Description**  
POWER LAYOUT

**Drawing Number**  
E12030PRA11-E-02

Scale 1:100	Design VS
Drawn VS	Approved MM
Date 12-11-2014	Revision A