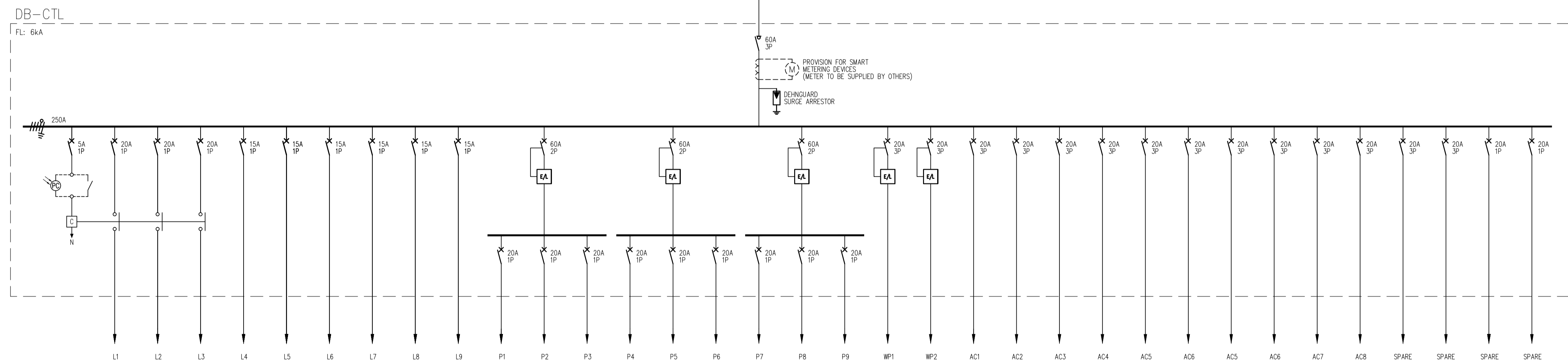


REVISION	DATE	DESCRIPTION	REV. BY
A	30-05-2015	ISSUED FOR INFORMATION	M.M

DB/KIOSK NOTES:

- DB SHALL COMPLY WITH REQUIREMENTS OF IEC439-1 (LV SWITCHGEAR AND CONTROLGEAR ASSEMBLIES)
- ALL CIRCUIT BREAKERS AND ISOLATORS TO BE FROM CBI OR MBSUN GERM MANUFACTURES
- DB'S SHALL BE FLOOR STANDING IN A CUPBOARD WITH LOCKABLE DOORS
- DB'S COLOUR: ELECTRIC ORANGE
- DB FEEDER CABLE ENTRY: BOTTOM
- DB CONDUIT ENTRY : TOP AND BOTTOM
- ALLOW FOR 30% SPARE SPACE ON DB.



	CONDUCTOR (W)		CABLE (C)		SIZE (mm²)	
	2.5	x 2	(W)	2.5	x 2	(W)
	2.5			2.5		
	20			20		

ALL WORK TO BE IN ACCORDANCE WITH N.B.R. BRAND NAMES DENOTE SIMILAR & EQUAL APPROVED. ALL WORK AND MATERIALS IS TO COMPLY TO RELEVANT S.A.S. CODES WHERE APPLICABLE. ALL DIMENSIONS AND HEIGHTS ARE TO BE CHECKED ON SITE BEFORE WORK IS PUT IN HAND. ALL DISCREPANCIES TO BE REPORTED TO ENGINEER

Architect
 Ramlin square
 31 Hans Van Rensburg street
 Polokwane
 Tel:(+2715)291 4081
 Fax:(+2715)291 4081
 Cel:(+27)(0)82 404 0467
 rendani@aspirearchitects.co.za



Client
 UNIVERSITY OF VENDA
 University Road
 Thohoyandou
 0950
 Private Bag X5050
 Thohoyandou 0950



Project
 CONSTRUCTION
 TECHNOLOGY LABORATORY

Consultant
 High Voltage System Engineers
 P.O.Box 11076
 Vorna Valley, 1686
 TEL: (011) 805-4627
 FAX: (086) 561-8668
 Email: admin@hvse.co.za



Description
 DB CTL
 SINGLE LINE DIAGRAM

Drawing Number
 E12030PRA11-E-03

Scale 1:100	Design VS
Drawn VS	Approved MM
Date 12-11-2014	Revision A